

# EFFICIENT SMART SAFE

H-Flex Steam Liner 3.0

*with Steam Bag*

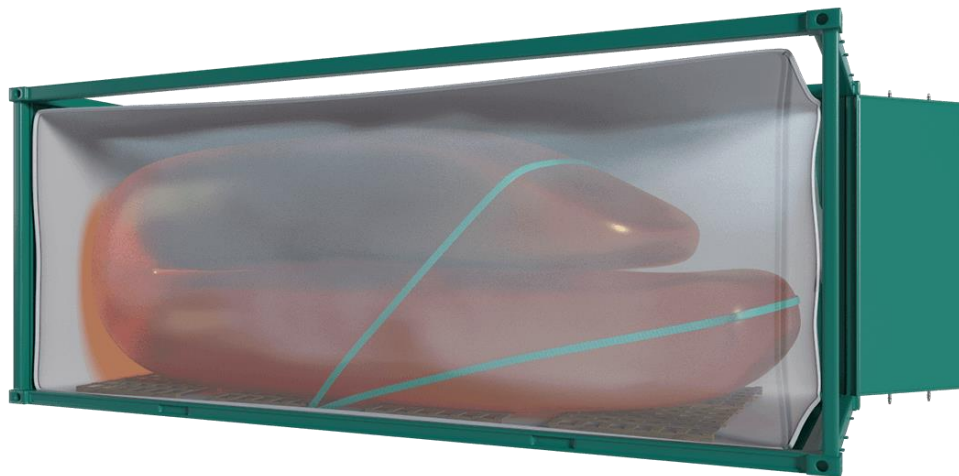
Fitting Instructions Manual



**EFFICIENT  
SMART  
SAFE**

# H-Flex Heater Flexitank

Our patented 'H-Flex Steam' Liner is an enhanced version of E-Flex that contains an integrated heating system to allow for fast heating of liquids for discharge. With our state of the art heating system, the loading and unloading processes are sped up 20 times compared to any other flexitank.



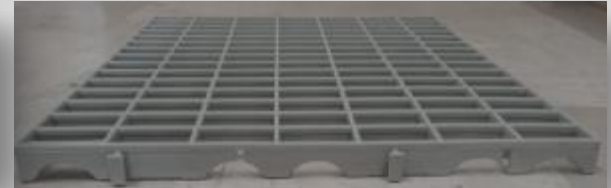
**EFFICIENT  
SMART  
SAFE**

# | Contents of the Box



H-Flex Plus 3.0 set includes the following :

1. E-Flex Easy Flexitank
2. Steam Liner
3. Steam Bag
4. 33 pieces of Grids
5. 3 pieces ½ Grids
5. Warning Labels
6. Adhesive Tape
7. Glass Wool



**The box will be used as door protection board. DO NOT throw it away!**



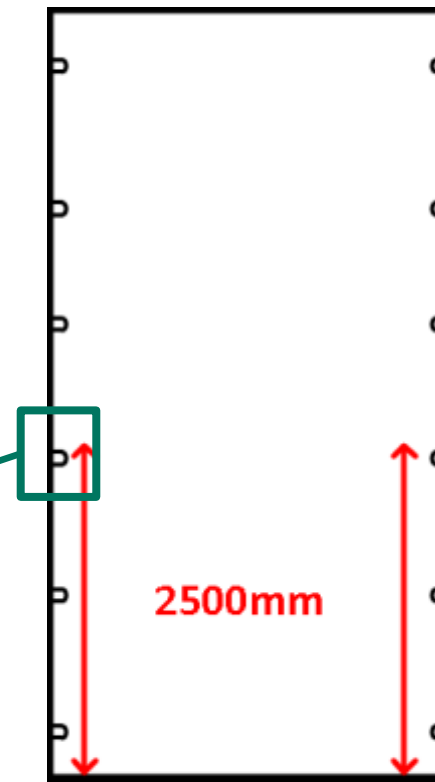
# Container Selection

- Use ONLY standard containers designed according to ISO 668 international norm.
- Ensure that containers have lashing rings on the floor.



# Container Selection

Central lug position may differ from one container to another. Ensure that there is a lug at least 250cm from the doors.



2500mm

DOOR SIDE

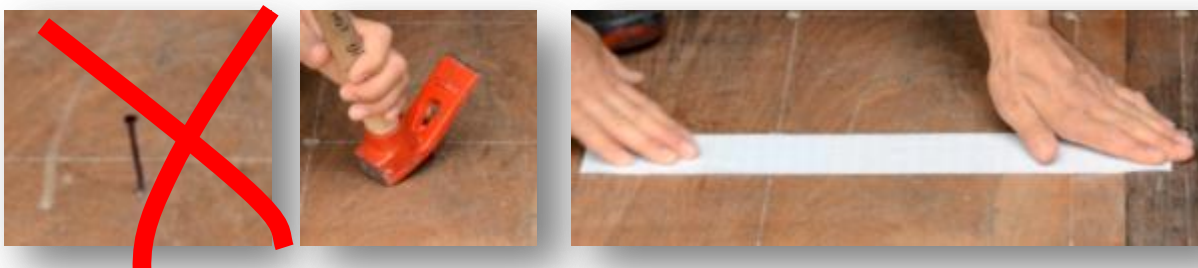


# I Preparation

- Sweep the container carefully with a broom.
- Ensure that the door bolts are silicon covered.

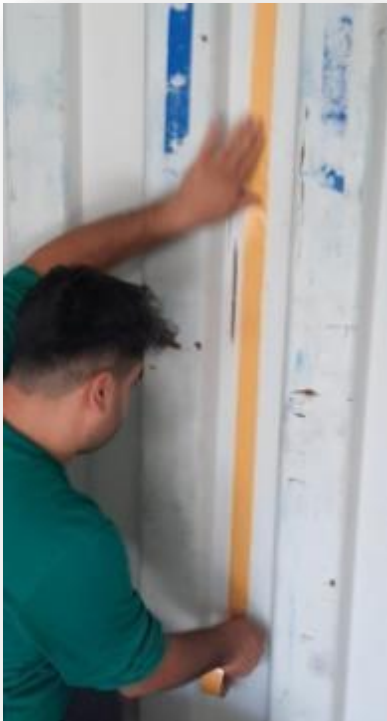


- Ensure that nails, sharp and rough objects that may damage/puncture the flexitank are removed.
- Cover uneven areas on the walls and on the floor with duck tape (thick tape).



# Preparation

- Cut 4 pieces of double-side adhesive tape to 170cm.
- Stick them to INWARD dents of the the front wall of the container at the center.
- Peel off the tapes.



# Preparation

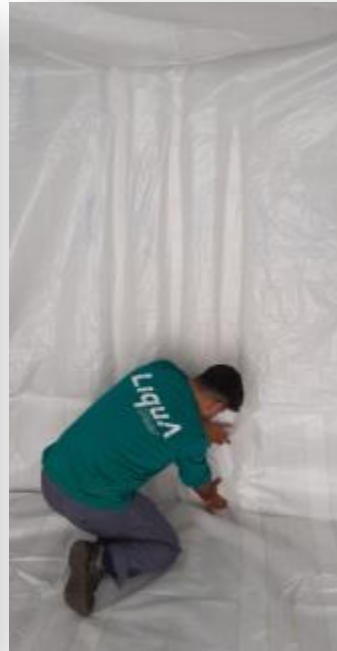
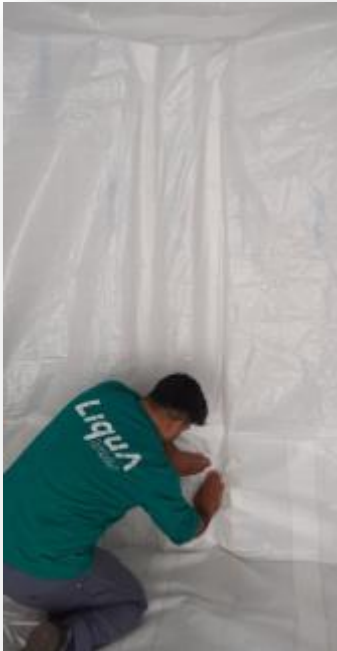
- Unroll the Steam Liner in the container.
- There are 12 tie cords sewn to the steam liner. Suspend the Steam Liner by tying up the cords to the closest lashing ring at the top & bottom.





# Preparation

- Get in to the Steam Liner through the opening at the door side.
- Stick the front wall of the Steam Liner to the tapes fixed to the front wall of the container.
- Ensure that you are creating 4 channels for steam circulation by sticking the Steam Liner to the front wall.



**EFFICIENT  
SMART  
SAFE**

# Steam Bag

- Unroll the Steam Bag on the ground.
- There are three separate channels in the steam bag. Insert 11 full size grids and one piece of ½ grid in each channel.
- Fold the Steam Bag like an accordion, as shown on the right.



# Steam Bag

- Insert the Steam Bag through the entrance of the Steam Liner.
- Unfold the Steam Bag on the container floor.
- Ensure that the Steam Bag meets to the front wall.



# Steam Bag

- The Steam Bag is longer than the container floor. Fold the longer part at the door side under the Steam Bag.
- Ensure that the steam connectors are not positioned under the Steam Bag.
- Couple two connectors on the left. Third connector on the Steam Liner is for water drainage. DO NOT connect it to the Steam Bag.
- Use wrench to ensure that the coupling is tight.



# | Fitting

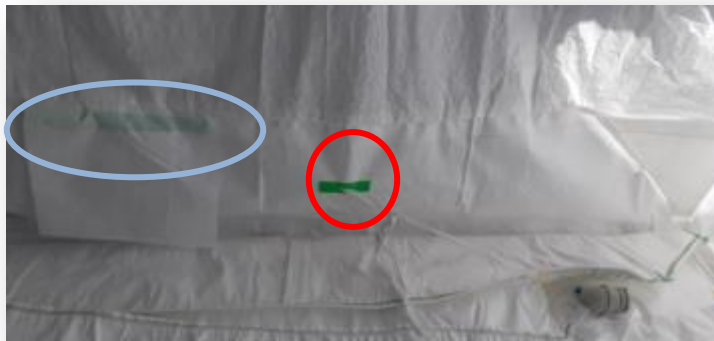
- Ensure that the E-Flex leans on the Steam Liner front panel.
- Unfold the E-Flex on the Steam Bag.
- Ensure E-Flex is placed at the center of the container.
- Do not to step on the E-flex while unrolling.
- Do not to wear shoes during the fitting operation.





# Belt Tying

You will find pre-cuts/holes on each side wall for lashing. Pass the lashing belts through the small cuts which is shown with red circle.



Use the big gap shown with blue circle to tie the belt to the lashing lug/ring. The ring is behind the Steam Liner. Use the gap to pull the belt and then tie to the ring.

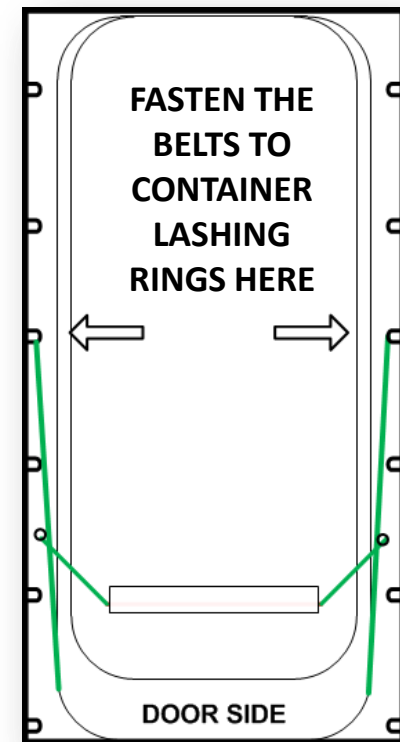


# Belt Tying



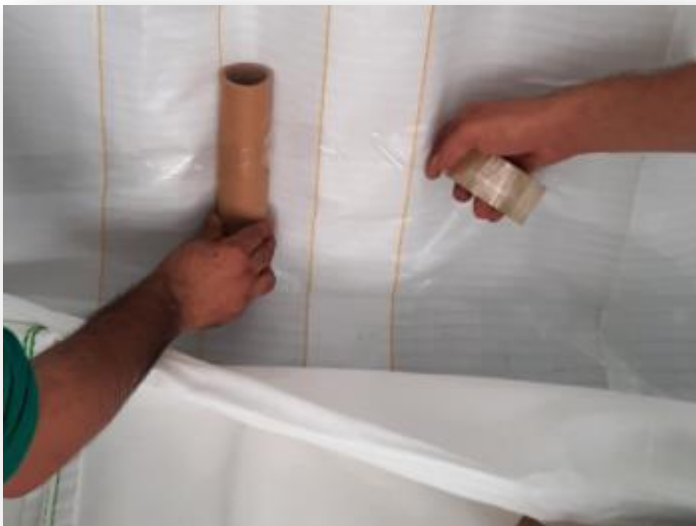
The straps must be taut but not tight.

Tie the lashing strap to the **CENTER** lug/lashing ring in past the joining knot.



# | Fitting

There are four carton support rolls in each flexitank box. Tape them to the steam channels.



# | Fitting

Cover the steam connectors with the provided glass wool.



# Door Protection

- The flexible harness prevents any flexitank movement. However to make sure that any sharp object/bolts on the door does not damage the flexitank, the carton box should be collapsed and used for protection.
- The box will be used as a door protector. Collapse the box as shown.





# | Door Protection

- Suspend the boards to the door closing bars.



# Check List

- Fill in the provided Check List and stick it to the door on the right hand side.



## **| Warning**

**IMPROPER FITTING MAY CAUSE CAPACITY PROBLEMS, INNER LAYERS MAY GET STUCK AND STRETCH. THIS MAY CAUSE SEVERE LEAKINGS. ONLY TRAINED AND LICENSED OPERATORS ARE ALLOWED TO FIT OUR FLEXITANKS.**

**IF FITTING OPERATION HAS BEEN PERFORMED AT ANOTHER LOCATION, PLEASE ENSURE THAT THE E-FLEX HAS NOT MOVED DURING LOCAL TRANSPORTATION.**

**EFFICIENT  
SMART  
SAFE**

**LiquA**

**THANK YOU**

LiquA Europe  
Calle Jose Aguirre 40, Piso 3 Valencia España  
CP: 46011  
+34 91 1238506  
LiquA Fabrika  
Atabey Cd. No 28 Kat 1 Çekmeköy 34794 İstanbul  
Türkiye  
+90 216 312 8660

[www.liquatrans.com](http://www.liquatrans.com)

| [info@liquatrans.com](mailto:info@liquatrans.com)