

**EFFICIENT
SMART
SAFE**



R-Flex-40ft capacity under 20kLt

Reefer Flexitank

Fitting Instructions Manual

Rev10 - 210111

Liqua

**EFFICIENT
SMART
SAFE**

Contents of the Box



Open the R-Flex box and ensure that the following are in the package:

1. R-Flex
2. 4 x Steel Lashing Buckles (Optional)
3. 28 x Corrugated Plastic Boards
4. PP Lining Material for floor
5. Warning labels
6. 2 x Cable ties



The box will be used as door protection board. DO NOT throw it away!

Container Selection

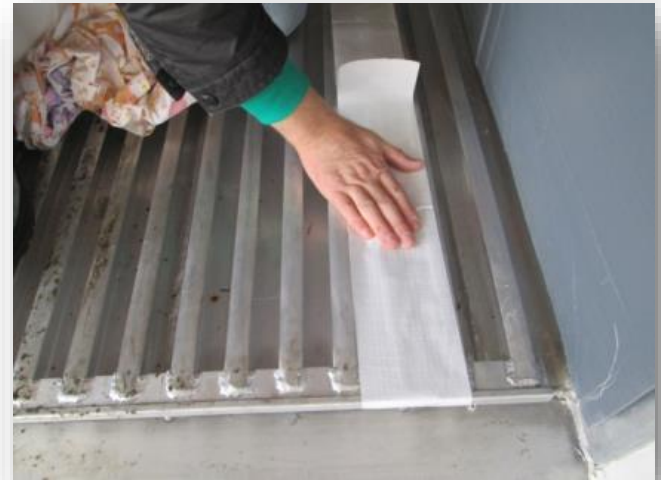
Ensure that:

- The reefer container is no older than 5 years.
IMPORTANT: The above is the requirement of Container Owners Assosciation. If it is not applicable ensure that below conditions are obtained.
- Reefer containers are clean, structurally sound and in excellent condition.
- The container is free of odor.
- The reefer container has no damage on the floor. The floor should be inspected / tested using a flat steel bar that will highlight any rough or sharp areas. The operator should test the floor both ways – towards the front wall and towards the door.



Container Preparation

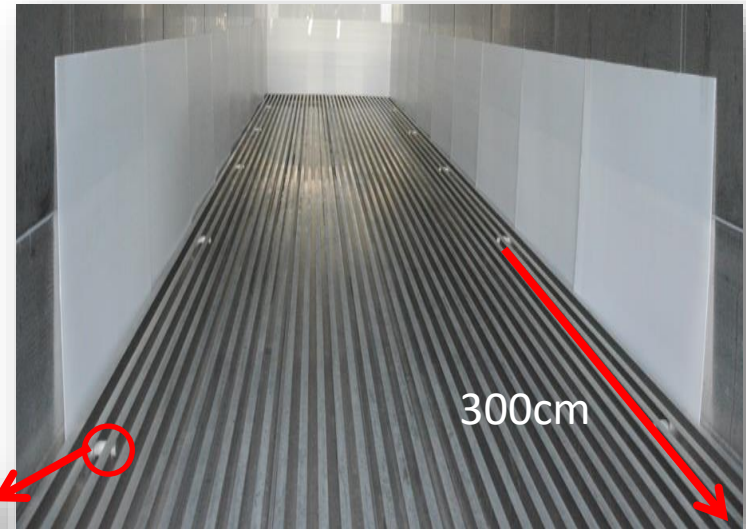
- Any sharp objects or surfaces should be removed from the floor and the sides of the container. This should include loose sharp objects that might circulate when the reefer fans operate.
- Any sharp or uneven surfaces on the floor should be covered with a fabric tape. Nails, sharps or any other objects that may damage/puncture the R-Flex should be removed or covered with fabric tape to make it safe for the flexitank.



Container Lugs

Use the container lugs if available between the outer most rails:

- The front side lugs should be at least **350cm** from end of the container.
- The door side lugs should be at least **300cm** from the doors of the container.

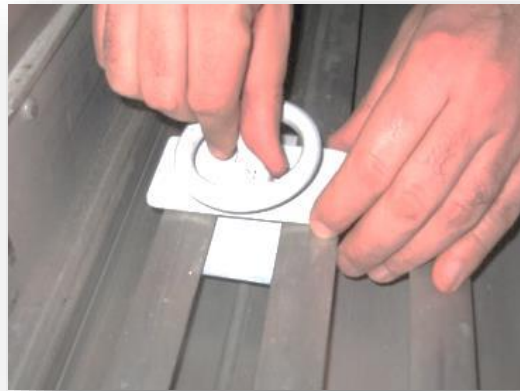


Container Lug

Buckles

If the reefer container does not have any container lugs, use the buckles provided in the box.

- All 4 buckles must be fixed tightly, 2 pieces per side, to prevent movement of the R-Flex.



- Do not overtighten the floor fasteners.



**EFFICIENT
SMART
SAFE**

Lining

- Cover the reinforcement/“kickboard” area on both side walls and the end wall as seen below with provided PP Flude Board Sheets. Ensure all edges are fully covered by tape.
- Ensure any remaining rough edges, joins, screws, surfaces are adequately protected by thick tape including the front wall.
- Cover any protruding areas such as finger holds in the front wall.



Lining

**EFFICIENT
SMART
SAFE**



Lining

- Place the supplied PP material. **Ensure that the smooth surface is facing up.** Ensure there is a gap of 25cm at the door side to allow optimal air circulation.
- Secure the lining in place with strong tape that will withstand the reefer operation and temperatures.



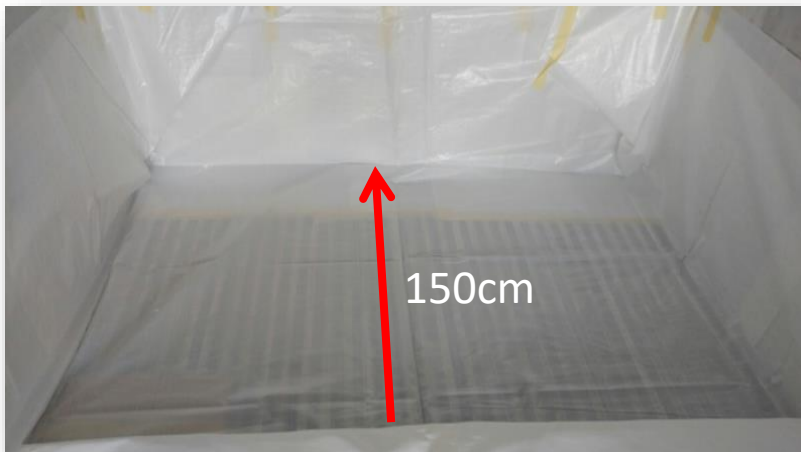
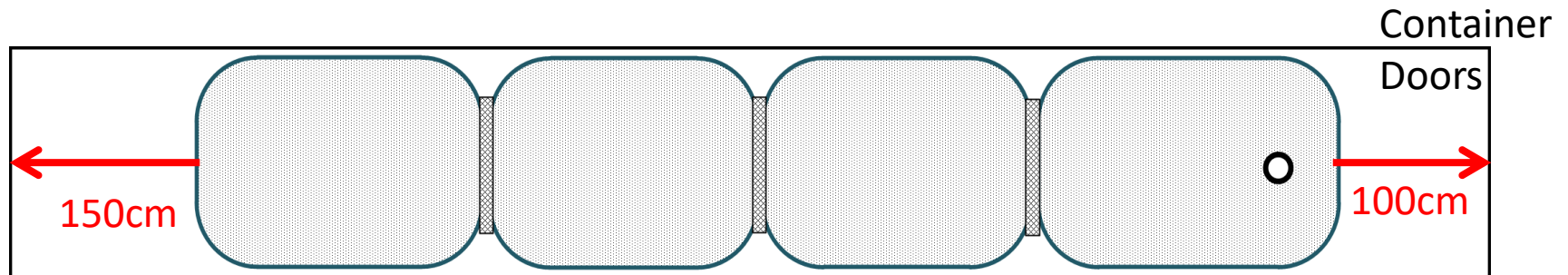
Positioning the R-Flex

- Ensure the flexitank is positioned in the center symmetrically on the floor.
- Unroll the R-Flex towards the front wall.
- **DO NOT** step on the R-Flex with hard shoes.



Positioning the R-Flex

Position the R-Flex in the container according to the below diagram.



Warning

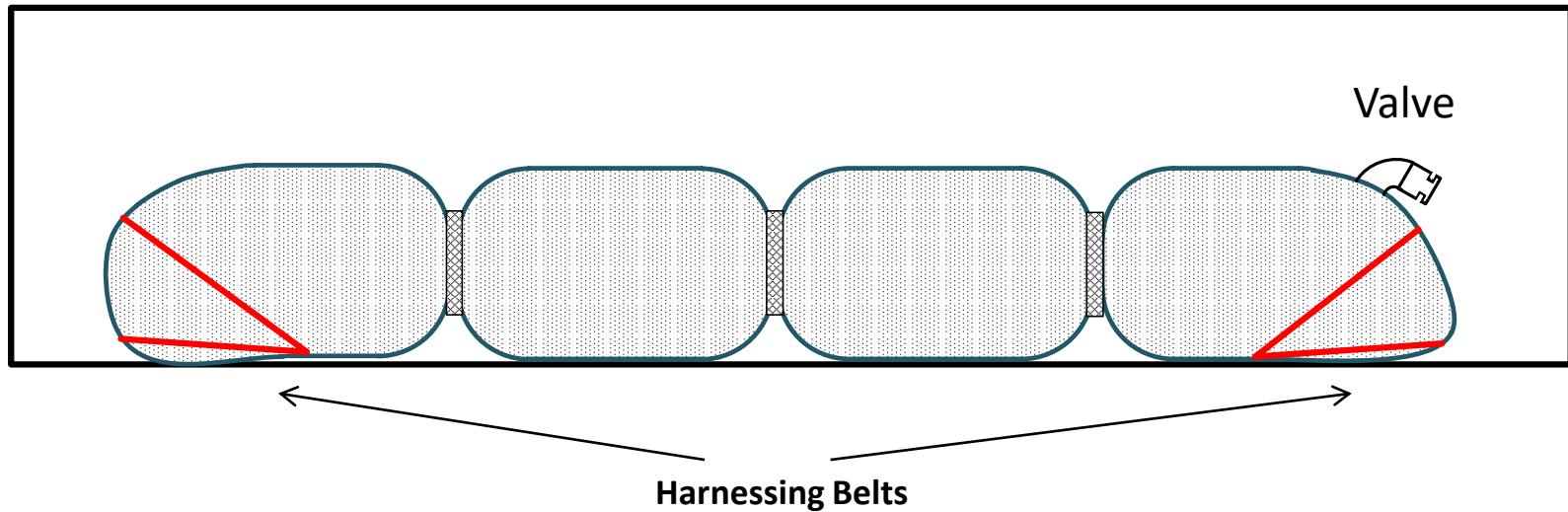
DO NOT remove the pre-folding tapes shown with arrows!

DO NOT open the folds!



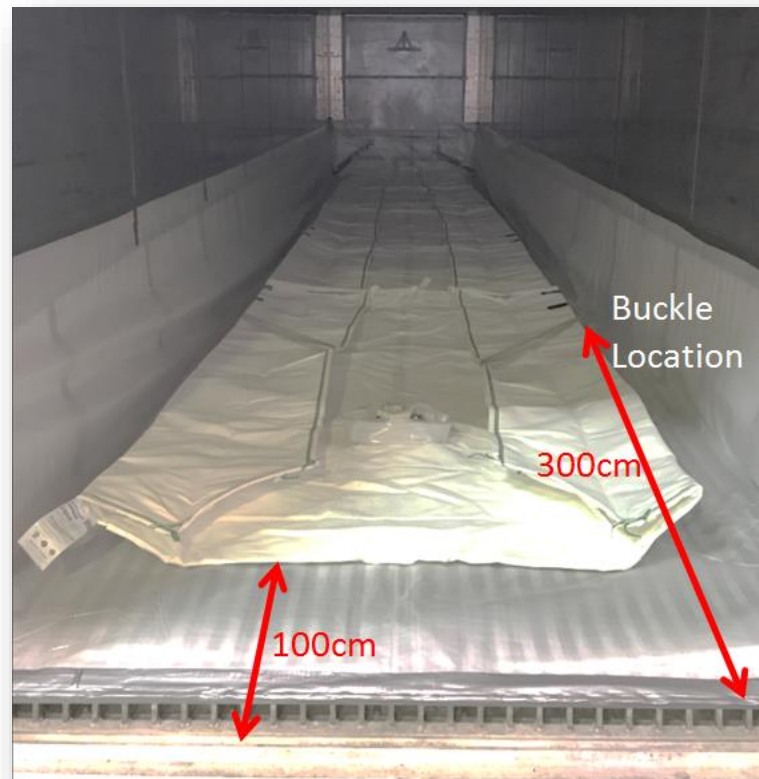
Belt Tying

R-Flex must be fastened to the lashing rings in the container to avoid sliding.



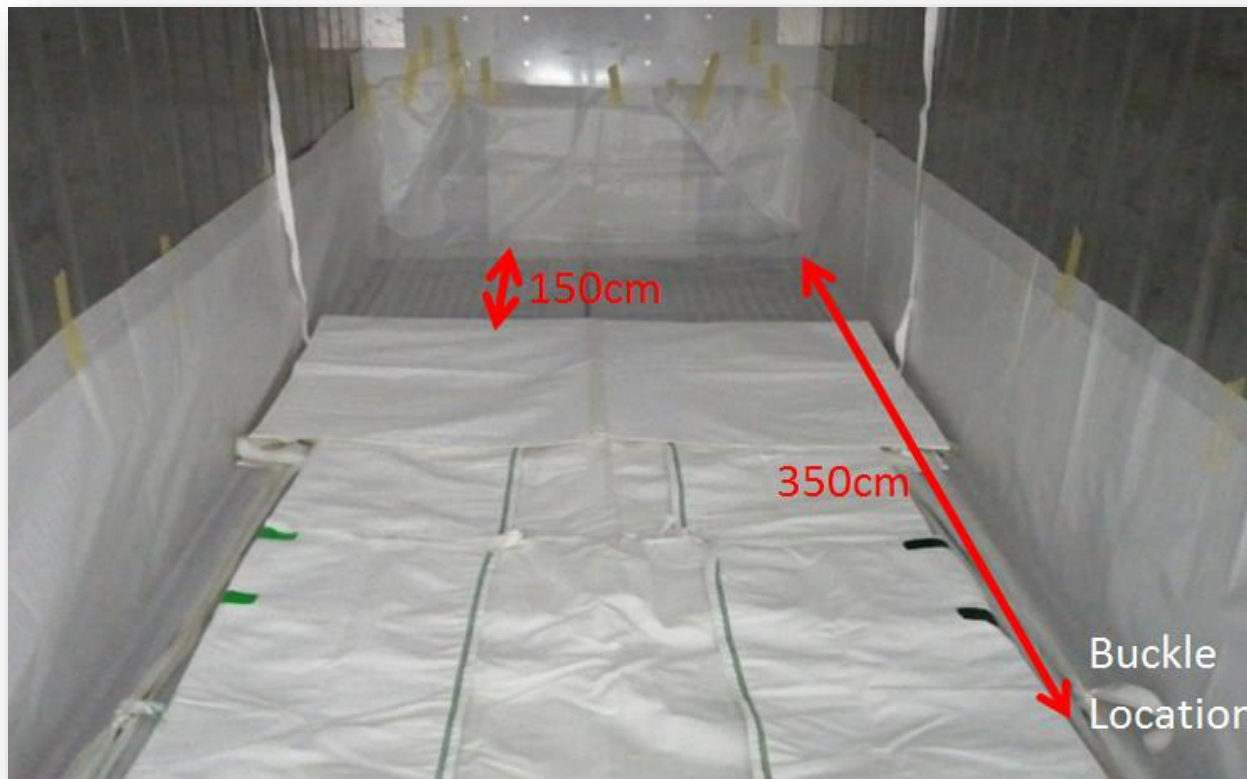
Door Side of the Container

The door side belts must be passed through the second container lug which is located at least 300 cm away from the container doors.



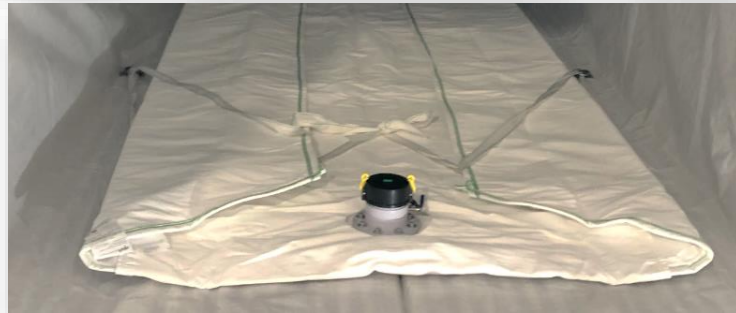
Front of the Container

The front side belts must be passed through the second container lug which is located at least 350 cm away from the container front wall.



Buckling

- Make a small cut on fitting fabric to pick out the container lugs/buckle.
- Take the free end of belt.
- Pass the belt through the container lugs/buckle.



Tying

- There is one loop on top of the flexitank with two ending points which goes to the sides and there is one free rope under the flexitank with two ending points which goes to the sides as well. You need to tie the rope with the loop in both sides.
- Follow the steps below to tie the loop with the free rope which you connected with the container lugs/buckle.



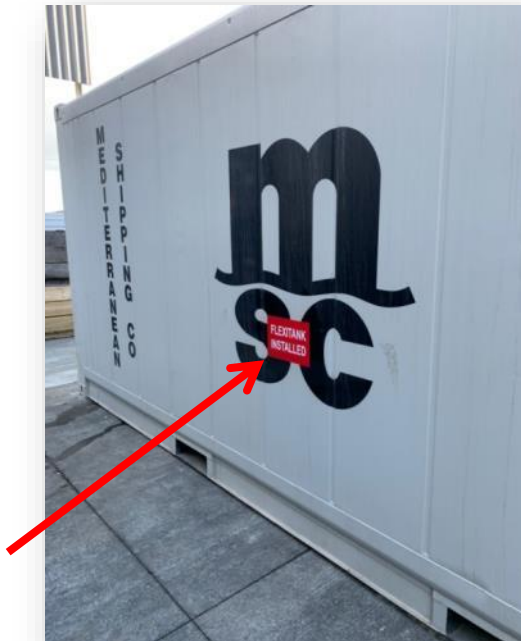
| Warning

IMPROPER FITTING MAY CAUSE CAPACITY PROBLEMS, INNER LAYERS MAY GET STUCK AND STRETCH. THIS MAY CAUSE SEVERE LEAKINGS. ONLY TRAINED AND LICENSED OPERATORS ARE ALLOWED TO FIT OUR FLEXITANKS.

IF FITTING OPERATION HAS BEEN PERFORMED AT ANOTHER LOCATION, PLEASE ENSURE THAT THE E-FLEX HAS NOT MOVED DURING LOCAL TRANSPORTATION.

Warning Labels

- Stick the warning labels on the side walls and the doors of the container.
- Clean the surface of the container prior to sticking the label for better adherence.



I FAQ

What happens if I don't tie the harnessing belts?

You may consider the harnessing belts of R-Flex like the seat belt of your car. If you don't buckle your seat belt and no accident happens during your travel, you arrive to the final destination safely. However in case of an accident, due to lack of seat belt, you may die or get severely injured.

Same principal is valid for R-Flex. If you don't tie the harnessing belts, nothing may happen until the final destination but in the event of an impact or accident, flexitank may shift towards the doors and cause a severe damage.

Also, when the container arrives to the final destination, flexitank may bulge out of the container at the time consignee opens the door. This might create hazard to the operators.

Ensure that harnessing belts are tied according to LiquA instructions.

I FAQ

Do I necessarily need to line every container with a protective material?

Yes...

We ask you to clean the container and inspect the sharp objects on the container surface very carefully. However, metal floor of the reefer containers may always have the possibility to contain sharp edges on the surface. Sharp edges as such may cause damage on the surface of the flexitank. We recommend lining the containers with corrugated plastic boards and pp woven material provided by LiquA.

IMPORTANT: Lining the container DOES NOT guarantee to protect R-Flex against sharp objects. Take necessary precautions before lining the container.

I FAQ

If I shorten the belts, untie the knots or position the flexitank in a different location can I reduce the flexitank capacity?

No.

- DO NOT change position of R-Flex on the floor of the container.
- DO NOT untie the knots on the flexitank.
- DO NOT tie the harnessing belts to a different location other than shown on this manual.
- DO NOT change the foldings.
- DO NOT remove the guiding paper tapes on the R-Flex.

In the contrary, changing any of the above not only does not change the capacity but also creates a hazard which may end up with a leak. R-Flex is designed to be assembled as easy as possible. Our production team has already folded, knotted, taped and prearranged everything for an easy fitting. Do not change any of the above. Just unroll the R-Flex, position correctly and tie the belts to the proper lashing rings/lugs.

Changing any of the above DOES NOT reduce the capacity. Fill R-Flex within the tolerances mentioned at the label and datasheet.

**EFFICIENT
SMART
SAFE**

LiquA

THANK YOU

LiquA Europe
Calle Jose Aguirre 40, Piso 3 Valencia España
CP: 46011
+34 91 1238506
LiquA Fabrika
Atabey Cd. No 28 Kat 1 Çekmeköy 34794 İstanbul
Türkiye
+90 216 312 8660

www.liquatrans.com

| info@liquatrans.com