

**EFFICIENT
SMART
SAFE**



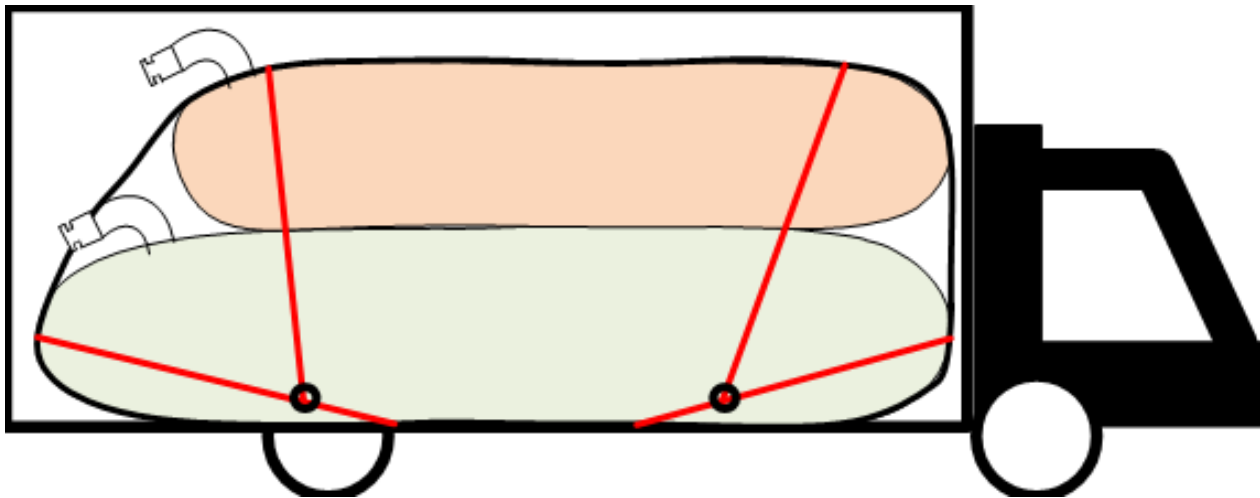
***Fitting & Loading
Instructions***

Dual E-Flex Easy Flexitank

Liqua

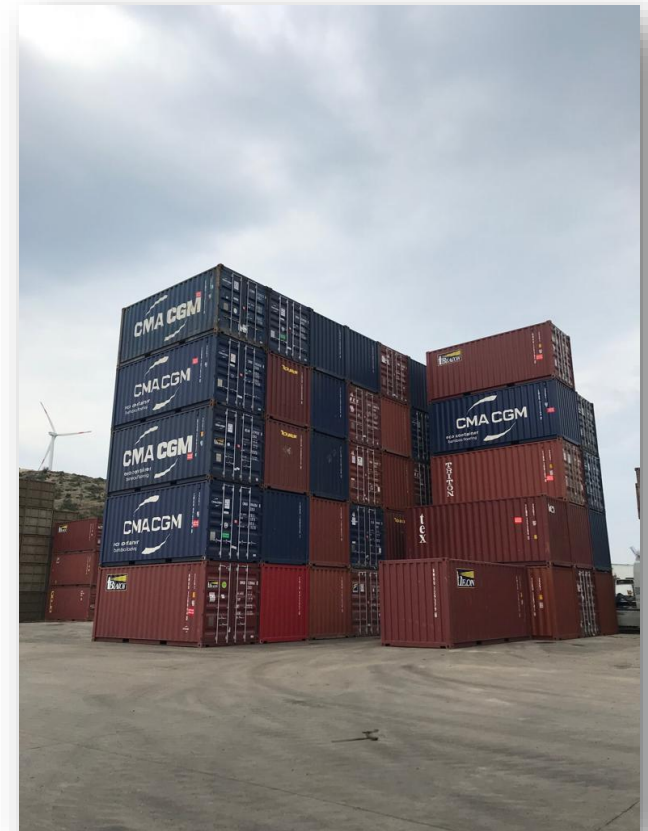
What is Dual E-Flex

Dual E-Flex is a flexitank with two separate compartments. Two different products can be transported at the same time.



Container Selection

- Ensure that only containers manufactured according to ISO 668 norm are used.
- Ensure that containers weight tested to a minimum of 28,000kg are used.
- Ensure that containers are no older than 5 years.
- Ensure that containers are clean, structurally sound and in excellent condition.
- Ensure there are no repairs on side walls and there is no damage to the floor.
- Use food grade containers only, that are free of any odor.
- Ensure that there are no insects, soil or contaminants that may cause customs issues at the destination.



Container Selection

- Use ONLY standard containers designed according to ISO 668 international norm.
- Ensure that containers have lashing rings on the floor.



**EFFICIENT
SMART
SAFE**

Contents of the Box



Open the Dual E-Flex box and ensure that the following are in the package:

1. Dual E-Flex
2. Warning labels
3. Adhesive Tape
4. Provided PP Fabrics



**The box will be used as door protection board.
DO NOT throw it away!**

**EFFICIENT
SMART
SAFE**

Container Lining

The container must be well covered with the supplied plastic lining materials as shown at the below picture.



Positioning the Dual E-Flex



- Position the Dual E-Flex to the edge of the right door.
- Unroll the Dual E-Flex.
- Do NOT step on the Dual E-Flex while unrolling.



Positioning the Dual E-Flex

- The distance between the Dual E-Flex and the outer end of the container must be **20 cm**. Use the label as a reference.



**EFFICIENT
SMART
SAFE**

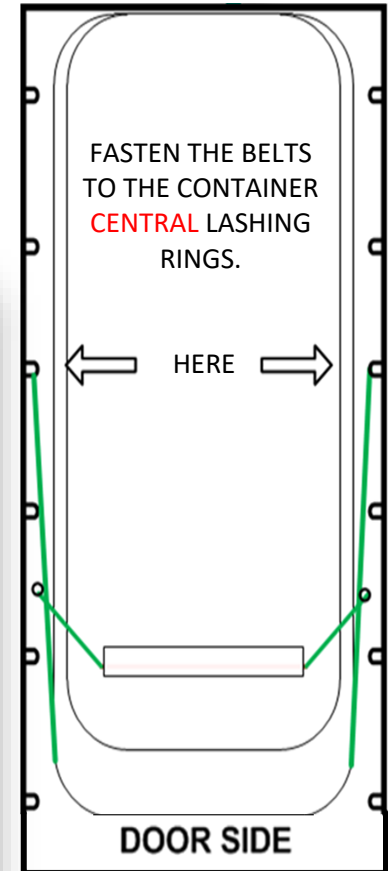
Dual E-Flex Flexible Harness

- Dual E-Flex must be fastened to the lashing rings/lugs on the container floor in order to stabilize the flexitank during the transportation.



Belt Tying

- While the end of the flexitank is still resting on the front wall and the strap is “taut but not tight”, tie the lashing strap to the **CENTER** lug/lashing ring in past the joining knot.



| Belt Tying



IMPORTANT:

Dual E-Flex is designed such that it will stand at least 15cm away from the doors after the filling. Loose or improper tying will inactivate the harnessing system and may cause the Dual E-Flex to shift/move towards the doors.

Also too tight/short belt tying may cause capacity loss and a possible eventual damage.

**ENSURE THAT BELTS ARE TIED
TAUT BUT NOT TOO TIGHT.**

| Belt Tying

- Ensure that belts are tied to the **CENTER** lug/lashing rings!



Door Protection

- The flexible harness prevents any flexitank movement. However to make sure that any sharp object/bolts on the door does not damage the flexitank, the carton box should be collapsed and used for protection.
- The box will be used as a door protector. Collapse the box as shown.



**EFFICIENT
SMART
SAFE**

Door Protection

- Suspend the boards to the door closing bars.



Check List

- Fill in the provided Check List and stick it to the door on the right hand side.



| Warning

IMPROPER FITTING MAY CAUSE CAPACITY PROBLEMS, INNER LAYERS MAY GET STUCK AND STRETCH. THIS MAY CAUSE SEVERE LEAKINGS. ONLY TRAINED AND LICENSED OPERATORS ARE ALLOWED TO FIT OUR FLEXITANKS.

IF FITTING OPERATION HAS BEEN PERFORMED AT ANOTHER LOCATION, PLEASE ENSURE THAT THE Dual E-Flex HAS NOT MOVED DURING LOCAL TRANSPORTATION.

Warning Labels

- Stick the warning labels on the side walls and the doors of the container.
- Clean the surface of the container prior to sticking the label for better adherence.



**EFFICIENT
SMART
SAFE**

| Ready for Filling



**EFFICIENT
SMART
SAFE**

I Coupling

Our standard valve is 3" male camlock. Upon request 2" reductor is available.

According to your 2 or 3 inch preference you will need to have a **female cam-lock** coupling.



**EFFICIENT
SMART
SAFE**

I Coupling

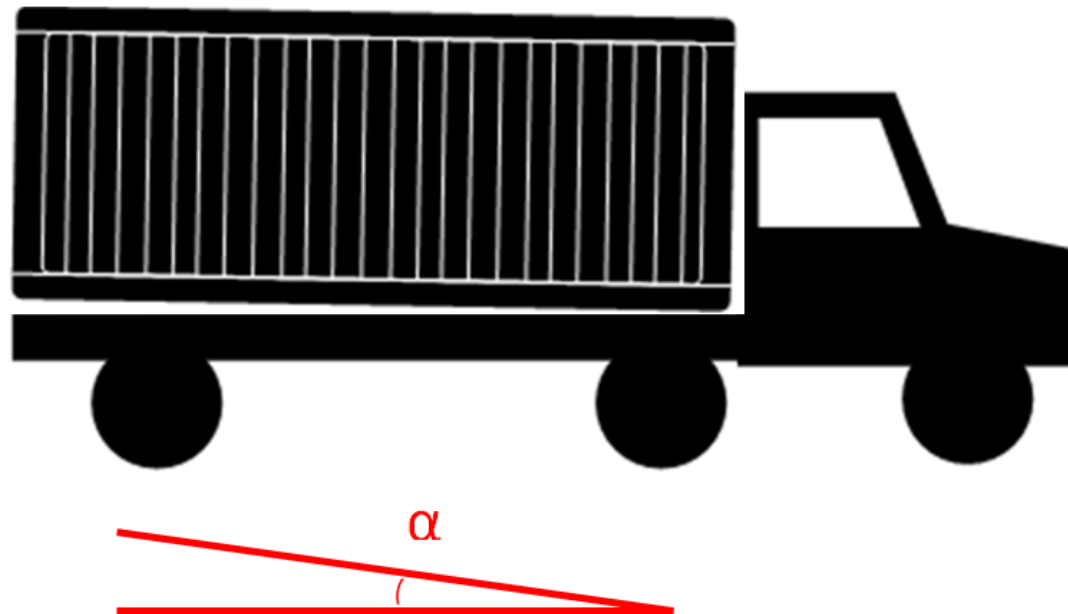


- Break the hygiene seal.
- Remove the dust cap.
- Couple the hose.
- Open the valve.
- Unroll the bonnet.



Filling

WARNING: The door side of the container should be approximately 15cm higher than the nose side during loading. You can do this by lifting the container on the truck or having something under the back side to make it higher. The loading should be 13,000 liter at the bottom compartment and 10,000 liter at the top compartment.



I Filling

WARNING: Ensure that the start up pumping speed does not exceed 300 lt /min until the Dual E-Flex rises to an approximate height of 30cm (roughly the first 2-3,000 litres) , then increase the speed up to 800lt/min. Please ensure that the filling stations follow this instruction carefully.



Filling Bottom Tank

- **Fill the Bottom tank First!**

Maximum capacity of the bottom tank is 13000lt and minimum capacity is 12000lt. Ensure that the amount of cargo loaded into the bottom tank is within the above range.



Filling Upper Tank

- **Fill the Upper tank Second!**

Maximum capacity of the upper tank is 10000lt and minimum capacity is 8000lt. Ensure that the amount of cargo loaded into the upper tank is within the above range.

IMPORTANT: Fillers must ensure that the upper chamber is well positioned over the bottom chamber, not dragged out, before starting to fill the upper chamber.



| Filling

After Loading;

- Close the valve.
- Ensure that the pin of the valve is locked.
- Remove the hose.
- Fasten the dust cap.



| Bonnet Closure

Dual E-Flex has two protective bonnets around the inlet to prevent contamination and to act as secondary containment in case of an incident.

Ensure that Bonnet is well tied according to our instructions.



| Bonnet Closure



The Protective Bonnet has two individual layers of plastic film.

Both layers must be tied **separately**.

1. Push back the outer bonnet to expose the inner bonnet for easy operation.
2. Twist the full length of the inner bonnet. Ensure that minimum amount of air/space is left in the bonnet.
3. Make a tight knot, as close as possible to the valve.
4. Unroll the outer bonnet.
5. Twist the full length of the inner bonnet. Ensure that minimum amount of air/space is left in the bonnet.
6. Make a tight knot, as close as possible to the valve.

**EFFICIENT
SMART
SAFE**

LiquA

THANK YOU

LiquA Europe
Calle Jose Aguirre 40, Piso 3 Valencia España
CP: 46011
+34 91 1238506
LiquA Fabrika
Atabey Cd. No 28 Kat 1 Çekmeköy 34794 İstanbul
Türkiye
+90 216 312 8660

www.liquatrans.com

| info@liquatrans.com