

**EFFICIENT
SMART
SAFE**



Filling Instructions Manual
E-Flex Easy Flexitank

Rev05-231011

LiquA

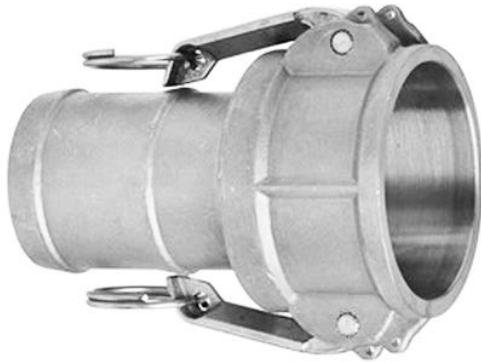
Ready For Filling

**EFFICIENT
SMART
SAFE**



EFFICIENT
SMART
SAFE

I Coupling



Our standard valve is 3" male camlock.

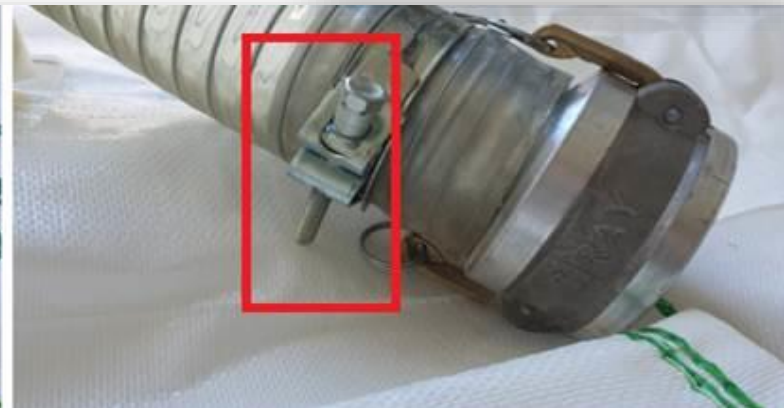
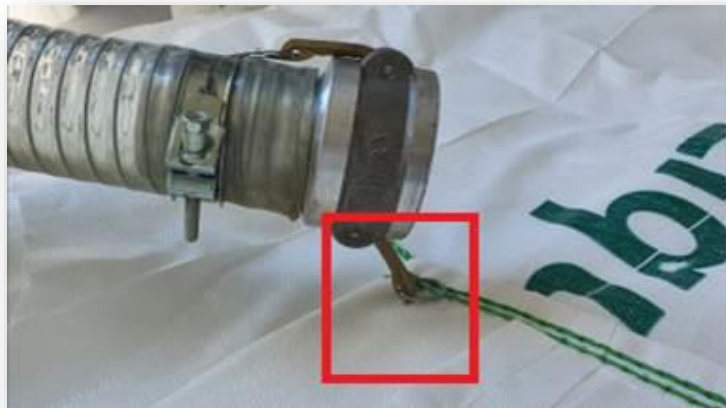
You will need to have a **3" female cam-lock** coupling. (DIN EN 14 420-7)

Upon request 2" reductor is available.

EFFICIENT
SMART
SAFE

WARNING

BEFORE COUPLING, **DO NOT** THROW
THE HOSE OVER THE FLEXITANK



**EFFICIENT
SMART
SAFE**

Coupling

Use the fabric or cardboard to protect the flexitank during the loading operation.



Coupling

**EFFICIENT
SMART
SAFE**



1. Break the hygiene seal.
2. Remove the dust cap.
3. Couple the hose.
4. Compress the latch.
5. Rotate the arm.
6. Unroll the bonnet.

**EFFICIENT
SMART
SAFE**

I Coupling

Lock the valve from the camlock lugs with a cable tie for a safer valve connection.



Filling

- Start loading the E-Flex.
- **WARNING:** Ensure that the start up pumping speed does not exceed 300 lt /min until the E-Flex rises to an approximate height of 30cm (roughly the first 2-3,000 liters) , then increase the speed up to 600lt/min. Please ensure that the filling stations follow this instruction carefully.
- Ideal filling time for 27,000liters is one hour...



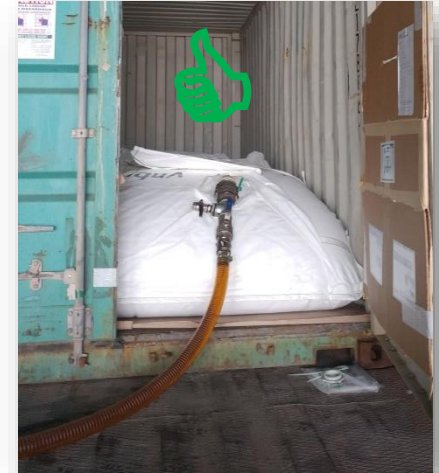
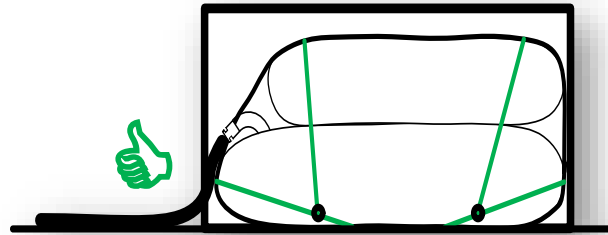
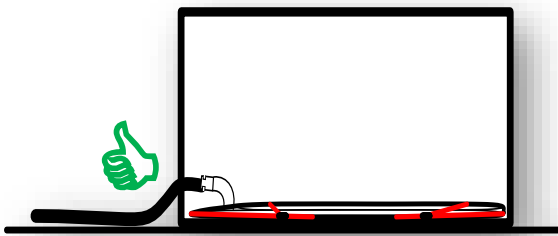
Filling

- Ensure that you have chosen a light weight filling hose.
- Couple the hose to the valve.
- Make sure that protective plastic cover `bonnet` is unrolled. It will avoid possible contamination due to spillage while decoupling.

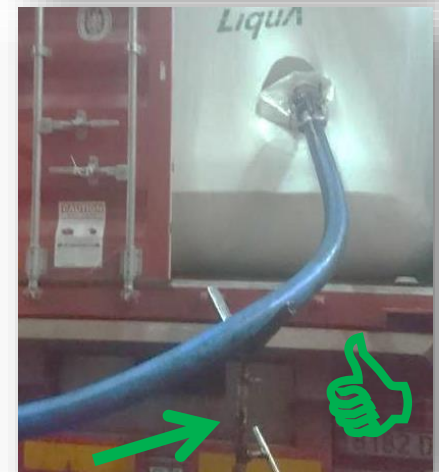
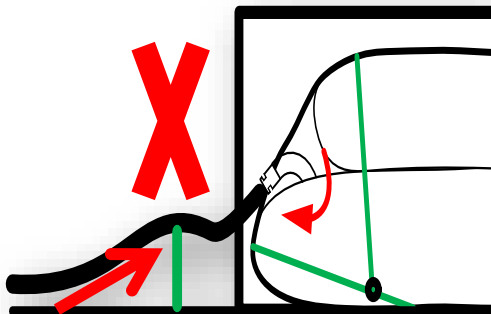


Supporting the Filling Hose

- Support the hose from the right point. Ensure that the hose is NOT put under any stress at any point in time during the entire filling period.



- Hose support must be done very carefully. Support shall not create any torsion/stress over the valve.



Supporting the Filling Hose

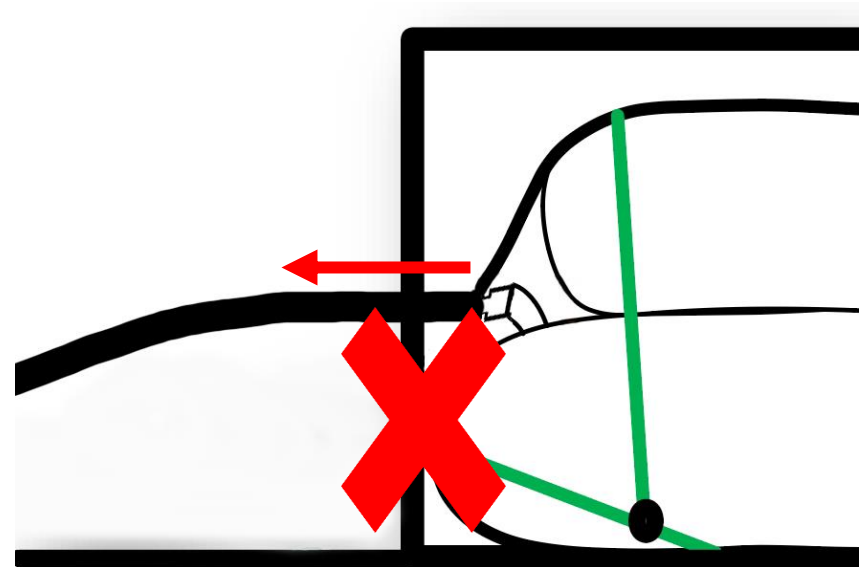
- Our valve is not static and goes up during loading. Therefore, if the filling hose is supported with a tripod or similar, ensure that the support point is being changed periodically during the entire filling.



- If no hose support is being used, ensure that the hose does not exert any pressure to the valve. Ideal standing is shown at the picture.

Supporting the Filling Hose

- Ensure that the hose is not too short and not too stiff. Prevent the hose from pulling out the flexitank towards the doors.



Filling



After Loading;

1. Close the valve.
2. Remove the hose.
3. Fasten the dust cap

| Bonnet Closure

E-Flex has two protective bonnets around the inlet to prevent contamination and to act as secondary containment in case of an incident.

Ensure that Bonnet is well tied according to our instructions.



Bonnet Closure



The Protective Bonnet has two individual layers of plastic film.

Both layers must be tied **separately**.

1. Push back the outer bonnet to expose the inner bonnet for easy operation.
2. Twist the full length of the inner bonnet. Ensure that minimum amount of air/space is left in the bonnet.
3. Make a tight knot, as close as possible to the valve.
4. Unroll the outer bonnet.
5. Twist the full length of the inner bonnet. Ensure that minimum amount of air/space is left in the bonnet.
6. Make a tight knot, as close as possible to the valve.

Check List

- Fill in the provided Check List after loading.



I FAQ

What happens if the E-Flex is loaded faster than the instructions?

If the cargo is filled in high speed, the layers of our E-Flex may not open easily, product may get trapped in between the layers and cause a puncture.

Ensure that the start up pumping speed does not exceed 300 lt /min until the E-Flex rises to an approximate height of 30cm (roughly the first 2-3,000 liters) , then increase the speed up to 600lt/min. Please ensure that the filling stations follow this instruction carefully.

How important is it to support heavy hose during the filling?

The filling hose must be supported very carefully. Support shall not create any torsion/stress over the valve. Our valve location is not static during the filling. Therefore, the support location should be changed when the hose starts to put stress on the valve.

I FAQ

What happens if I over load or under load the E-Flex than its nominated capacity?

Fill E-Flex within the tolerances stated at the datasheet and/or on the label.

Exceeding the upper limit may cause severe damage on E-Flex and flexitank may break with a total loss result.

If you under load the E-Flex less than the bottom limit, lack of cargo in the flexitank may cause severe surge in the flexitank during the transportation.

Ensure that the amount of cargo in the E-Flex is within the tolerances.

IMPORTANT: We deliver our flexitanks air tight. Ensure that you do not pump in air into the flexitank. The volume of air in the flexitank cannot be predicted; you might be overloading the flexitank unintentionally due to the volume of air.

Common Filling Mistakes



Fill the flexitank according to the tolerances stated at the label. Under loading is not permitted.



Use the flexitank bonnet to avoid possible contamination



Hose support shall not create any torsion/stress over the valve

Common Filling Mistakes

Below is a photograph taken after the postmortem. As you may see, the inner polyethylene layers were melted at three individual spots, marked in green color.

If your cargos warmer than 35°C,

- Measure the temperature ex-hose, meaning that measure the temperature of the cargo inside the hose. The temperature on the tank may mislead.
- Preferably, DO NOT pump the first few liters in the hose to the flexitank but somewhere else.
- ALWAYS, make slow filling, 300liters per minute.



**EFFICIENT
SMART
SAFE**

LiquA

THANK YOU

LiquA Europe
Calle José Aguirre 40, Piso 3 Valencia España
CP: 46011
+34 91 1238506
LiquA Fabrika
Atabey Cd. No 28 Kat 1 Çekmeköy 34794 İstanbul
Türkiye
+90 216 312 8660

www.liquatrans.com

| info@liquatrans.com