

EFFICIENT SMART SAFE

H-Flex Steam Liner 3.0

with Steam Bag

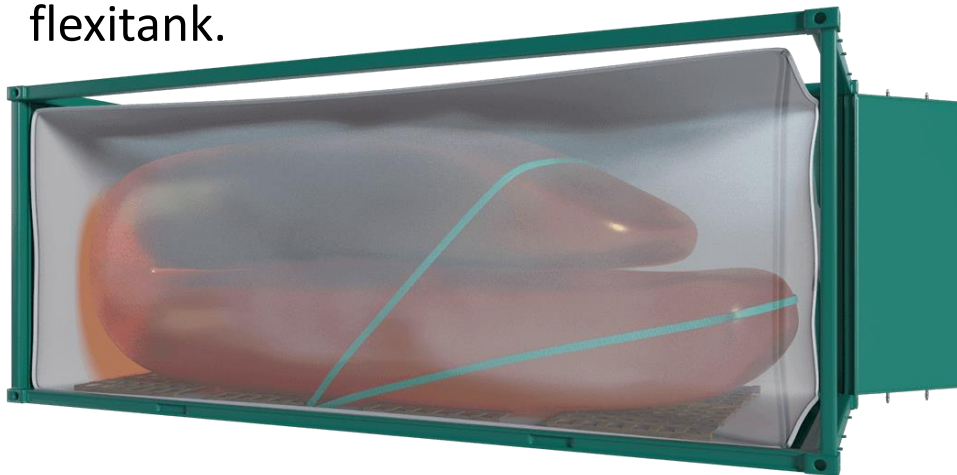
Heating Instructions Manual



**EFFICIENT
SMART
SAFE**

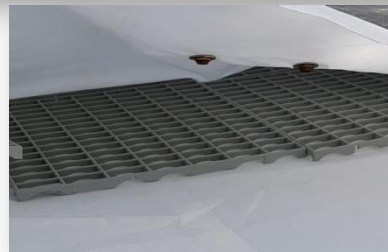
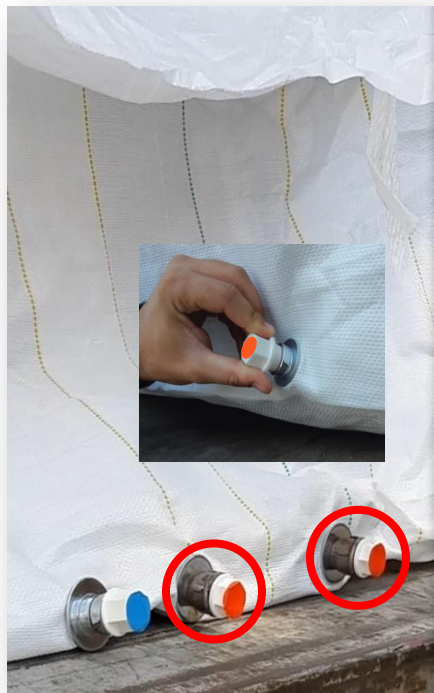
H-Flex Heater Flexitank

The H-Flex Steam Liner is an enhanced version of E-Flex that contains an integrated heating system to allow for fast heating of liquids for discharge. With our state of the art heating system, the loading and unloading processes are sped up 20 times compared to any other flexitank.



Preparation

Steam exposure will be through the connectors shown in red circles. Behind the connector, there is a Steam Bag, and the grids in it to elevate the flexitank.



I Preparation

There are 3 connections at the bottom of the Steam Liner.

Couple the water drainage tap with the **blue** connection and keep the water drainage tap **OPEN** at entire heating procedure. Our taps have $\varnothing 16\text{mm}$ connection.



Preparation

Steam Liner has ½” BSP female connections.

Connections marked with red color are for steam. You may choose either one or according to your set up, you may couple both of them with steam.



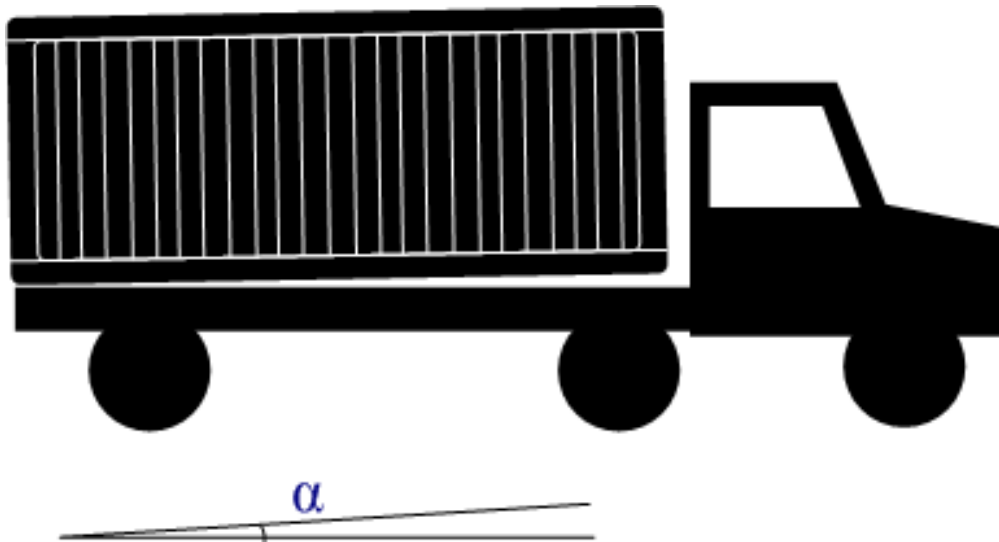
Preparation

- Remove the red cap.
- Couple a proper camlock.
- Couple the steam hose.



Preparation

Ensure that the front of the container is in a higher position compared to the back during entire steaming and discharging, so that it will have the necessary slope to facilitate the discharge.



Close the right door as much as possible.



EFFICIENT
SMART
SAFE

Heating

- Start blowing steam with only **1 bar** pressure at the beginning. Then increase to **4 bar** pressure after 3 minutes.
- Maximum applicable steam temperature is **130°C**.
- Consult LiquA for the duration of steam application. LiquA will advise a proper heating period according to your cargo and ambient temperature.
- During the heating operation steam and water may leak out of the Steam Liner. Please continue to the operation.
IMPORTANT: The condensed steam will be at highest 30 degrees Celsius. It is harmless.
- Heat the cargo without any break at the steam supply.



| Discharging



When you feel the cargo is completely melted, start discharging.

IMPORTANT: Despite you think that the whole cargo is melted but you found out that a portion is not melted during the discharge, keep steam exposure while discharging the cargo.

| Discharging

- Untie both layers of bonnet/ plastic cover around the valve.
- **IMPORTANT:** Do not cut the bonnet / plastic cover at entire discharging operation.
- Remove the dust cap.
- Couple the hose.
- Open the valve.
- Unroll the bonnet.



| Discharging

- After pumping all the product out, untie the two lashing straps attached to the container that hold the flexitank harnesses in place.
- This will allow the flexitank to be folded up.
- When the harness lashing straps are loose, the flexitank should look as shown in the right hand picture below.



| Discharging

- Roll-up the E-flex flexitank towards the doors, pushing the liquid towards the outlet in the process.



| Discharging

- The E-flex and Steam Liner should be empty and ready for recycling at this point.



Untie the Steam Liner lashing straps. Drain the condensed steam at the bottom of the Steam Liner before removing the flexitank.

**EFFICIENT
SMART
SAFE**

LiquA

THANK YOU

LiquA Europe
Calle Jose Aguirre 40, Piso 3 Valencia España
CP: 46011
+34 91 1238506
LiquA Fabrika
Atabey Cd. No 28 Kat 1 Çekmeköy 34794 İstanbul
Türkiye
+90 216 312 8660

www.liquatrans.com

| info@liquatrans.com