

**EFFICIENT
SMART
SAFE**



I-Flex Storage Tank Instructions Manual

Rev04-230818

LiquA

I-Flex Storage Tank



- Ensure that the area where the I-Flex is to be deployed is flat and free of sharp objects that may damage / puncture the bladder.
- If appropriate a groundsheet should be used if all sharp objects cannot be effectively removed
- It is better if there is a slight inclination on towards the discharge valve to optimise the discharge process.

I Application



- Be careful when opening the box. **DO NOT** use a knife as there is a risk of damaging the bladder tank.
- Carefully remove the I-Flex from the box and place it in the area to be deployed. If appropriate the box can be split open to make the removal easier.

I Application



IMPORTANT:

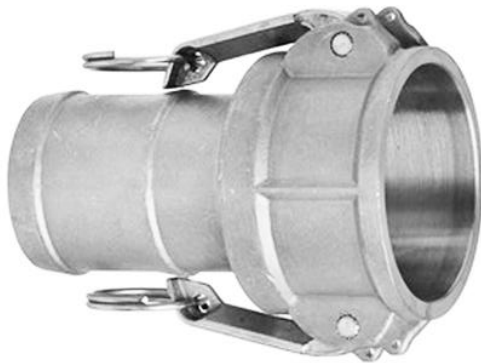
- Unroll I-Flex in the centre of the area for it to be deployed.
- Once it is unrolled, unfold the bladder so that it is completely flat on the ground with no folded sections.

**EFFICIENT
SMART
SAFE**

I Coupling

Our standard valve is 3" male camlock.

You will need to have a **3 " female cam-lock** coupling. (DIN EN 14 420-7)



Coupling

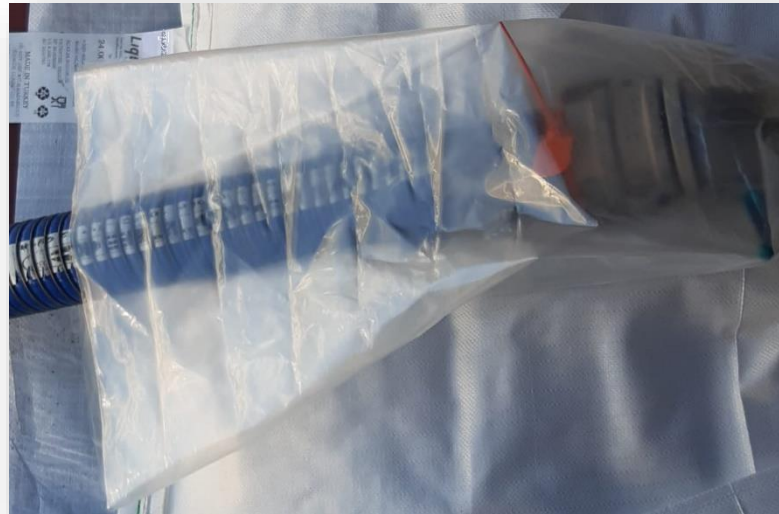
- Break the hygiene seal.
- Remove the dust cap.
- Couple the hose.
- Open the valve.
- Unroll the bonnet.



- Only flexible hose should be used to connect to the fittings and for at least 1m from the bladder before being attached to any fixed supply lines.
- Ensure all valves are locked open before filling commences.

I Filling

**EFFICIENT
SMART
SAFE**



- The I-Flex is now ready for filling.
- If the bladder needs to be walked on during the installation process, ensure boots are removed first and the bladder tank is empty.
- Ensure all valves are locked open (ensure the positive locking pin locking the valve open is secure to prevent the valve closing during - filling)

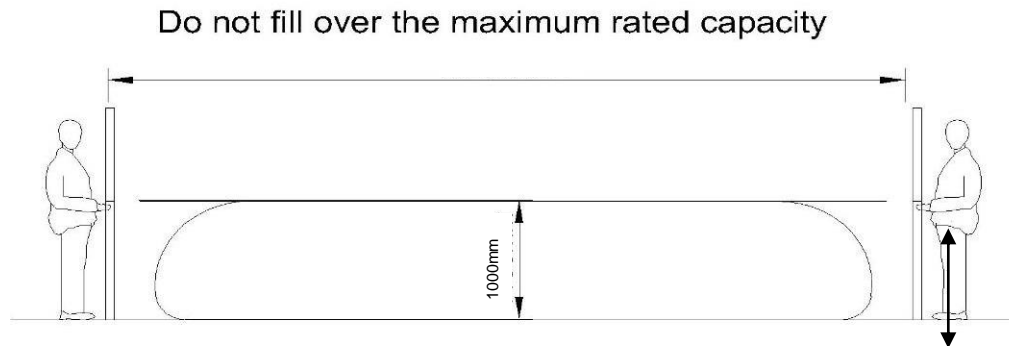
I Filling

WARNING: Ensure that the start up pumping speed does not exceed 300 lt /min until the I-Flex rises to an approximate height of 20cm, then increase the speed up to 800lt/min.

IMPORTANT: The max. fill height of the bladder tanks is 100cm. Ensure some form of fail-safe overflow.

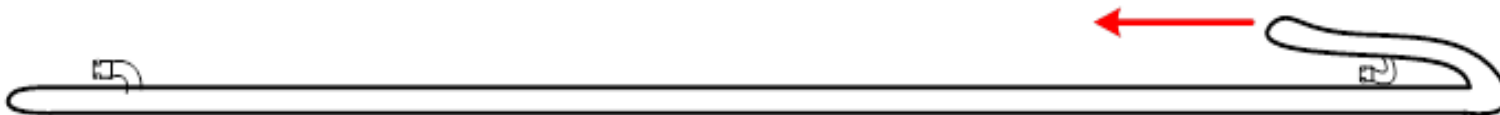
Ensure that no air is pumped into the I-Flex.

After the filling is completed covering the I-Flex with a tarpolin will extend its life time and enhance the protection against possible ambient risk factors.



I Discharging

- During the discharge, ensure that the start up pump speed is to be maximum 800 lt/min. After the I-Flex lower to an approximate height of 20cm, **DO NOT** exceed 300 lt/min pump speed.
- At the very final stage of the discharge, drag I-Flex from its corner loops toward the discharging valve in order to drain the last drops in I-Flex.
- **Do NOT** suspend the I-Flex from the loops by crane.



**EFFICIENT
SMART
SAFE**

I-Flex Storage Tank



- I-Flex bladder tanks can be reused multiple times. To increase the number of times they can be reused it is important that it is folded and stored properly if they are not being used for continuous storage (ie in the same way that it was supplied from the factory).
- Once the discharge is complete, ensure that the I-Flex is completely empty and folded similar to the way it was taken out from the box.

**EFFICIENT
SMART
SAFE**

LiquA

THANK YOU

LiquA Europe
Calle Jose Aguirre 40, Piso 3 Valencia España
CP: 46011
+34 91 1238506
LiquA Fabrika
Atabey Cd. No 28 Kat 1 Çekmeköy 34794 İstanbul
Türkiye
+90 216 312 8660

www.liquatrans.com

| info@liquatrans.com