

**EFFICIENT
SMART
SAFE**



***Fitting and Filling Instructions Manual
T-Flex Flexitank for Trucks***

Rev02-221014

LiquA

Truck Selection

- Ensure that the truck is no older than 5 years.
- Ensure that the truck is in excellent condition.
- Ensure that lashing rings are in good condition.
- No damages on the floor or side walls.
- Food grade trucks only - free of odors.



I Preparations

- Sweep the truck with a broom carefully.
- Ensure that nails and other sharp objects are removed from the floor and the sides.
- Cover potential uneven areas on the floor with duck tape (thick tape).
- Ensure that nails and other objects that may damage/puncture the T-flex are removed or covered with duck tape (thick tape).



Protection

- Use carton boards to cover the sharp metals/poles of the truck.
- Use the carpet to cover the side walls of the truck.



Protection

- Ensure that corners and tent frame pillars are well covered.
- Ensure that front wall is well covered and resistant to a possible pressure.



Contents of the Box



Open the T-Flex box and ensure that the following are in the package:

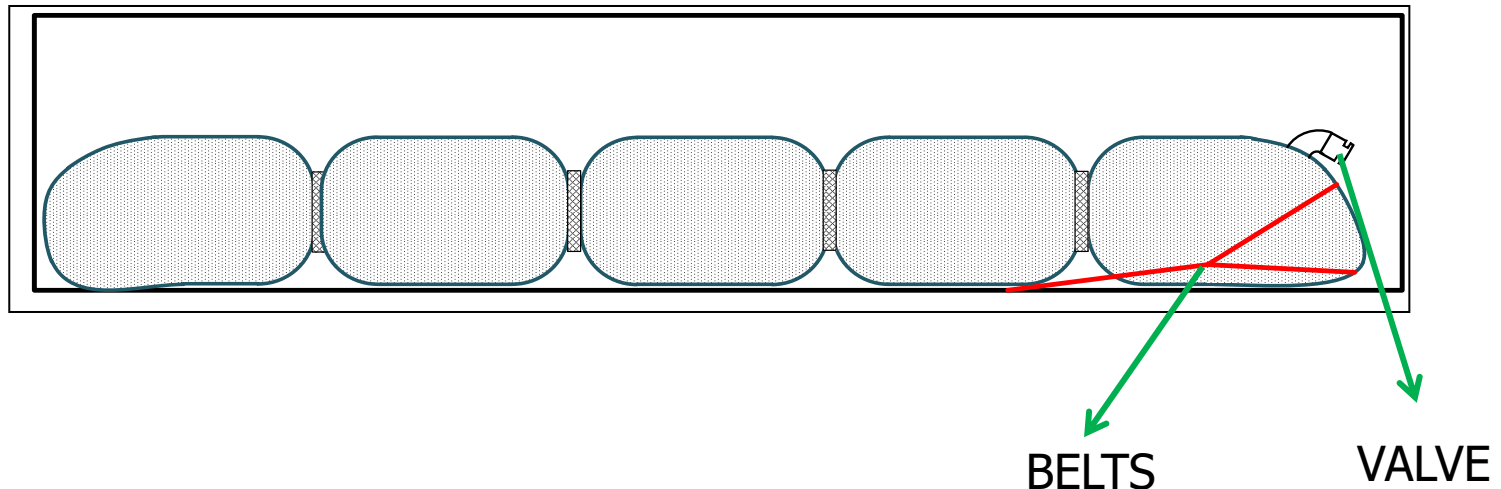
1. T-Flex
2. Warning Label
3. Protective Cardboards
4. Cable tie

**The box will be used as protection board.
DO NOT throw it away!**

Design

T-Flex uses a long mono block tube/bladder that has several **Anti-sloshing** “rings” to shrink down the total circumference at certain areas to compartmentalize the bladder.

Should a vehicle break suddenly during transit, the design’s rings create bottlenecks that help dissipate any energy created by the liquid moving around. This helps avoid the formation of hydrodynamic forces and keeps your cargo safe.



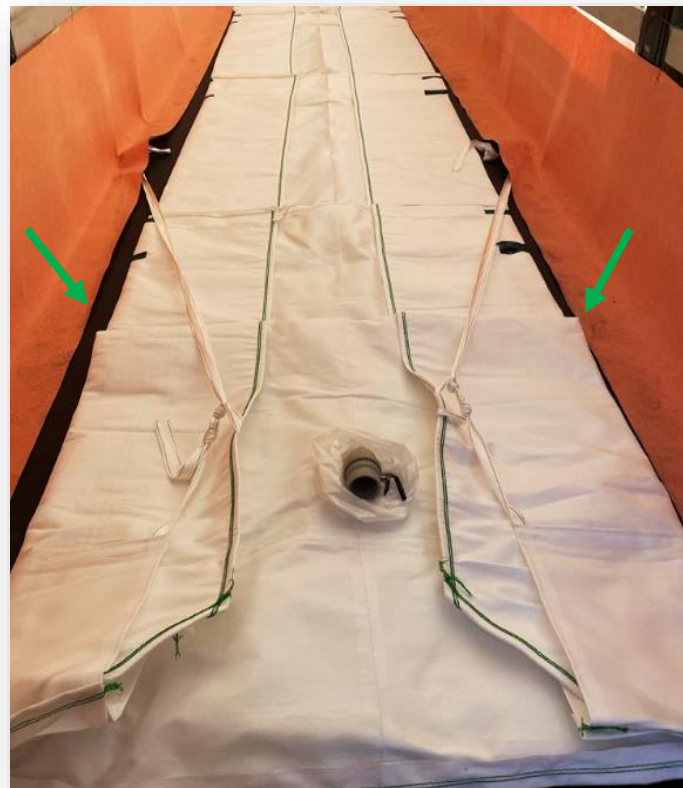
Positioning the T-Flex

- Unroll the T-Flex.
- Do NOT step on the T-Flex while unrolling.
- Make sure T-Flex is positioned at the center of the trailer.



Positioning the T-Flex

- Make a new fold at the valve part. The fold must be 10 cm.



Positioning the T-Flex

- Ensure that the front of T-Flex is leaning to the front of the truck/nose of the container.



DO NOT remove the pre-folding tapes.

DO NOT open the folds.

The tapes are there to ensure to position the anti-sloshing rings at the right place.

Removing the tapes may cause severe problems.



Lashing

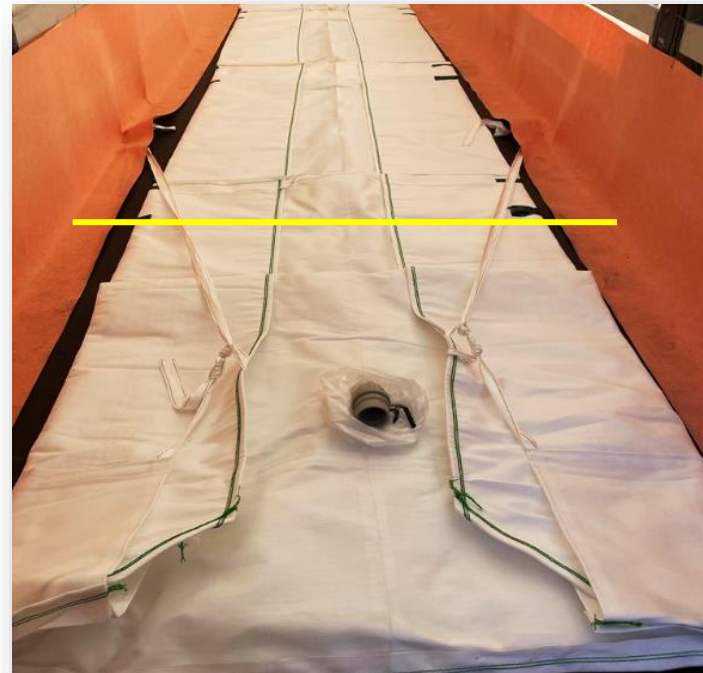
- Make a small cut on carpet to pick out the lashing ring.
- Pass the belt through the lashing ring.



Belt Tying

Tie the lashing strap to the lug/lashing ring “taut but not tight”.

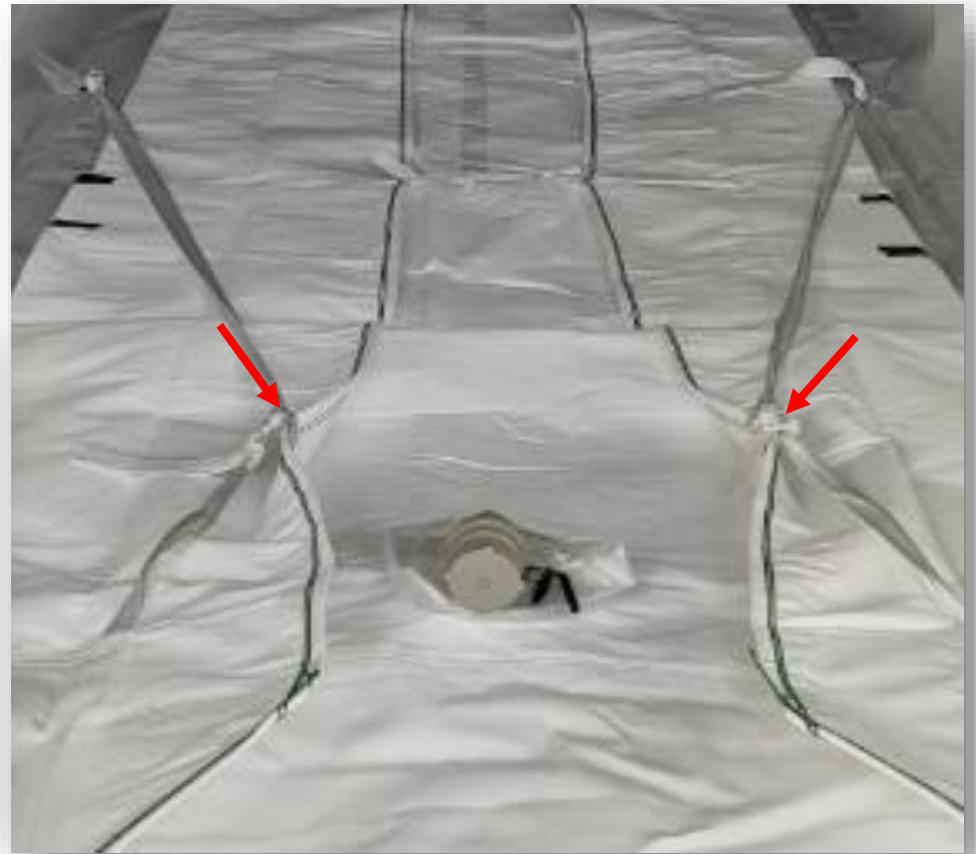
IMPORTANT: The green scotch/duck tapes on the flexitank indicates the location of the first Anti-sloshing rings. Ensure that the harnessing belts are tied to a lug after the first ring.



**EFFICIENT
SMART
SAFE**

I Belt Tying

DO NOT remove the pre-folding tapes.



**EFFICIENT
SMART
SAFE**

| Ready for Filling



**EFFICIENT
SMART
SAFE**

Coupling

- Our standard valve is 3" male camlock. Upon request 2" reductor is available.
- According to your 2 or 3 inch preference you will need to have a **female cam-lock** coupling.



Coupling

- Break the hygiene seal.
- Remove the dust cap.
- Couple the hose.
- Open the valve.
- Unroll the bonnet.



Filling

START FILLING...

**EFFICIENT
SMART
SAFE**



DO NOT pump air inside the flexitank during filling

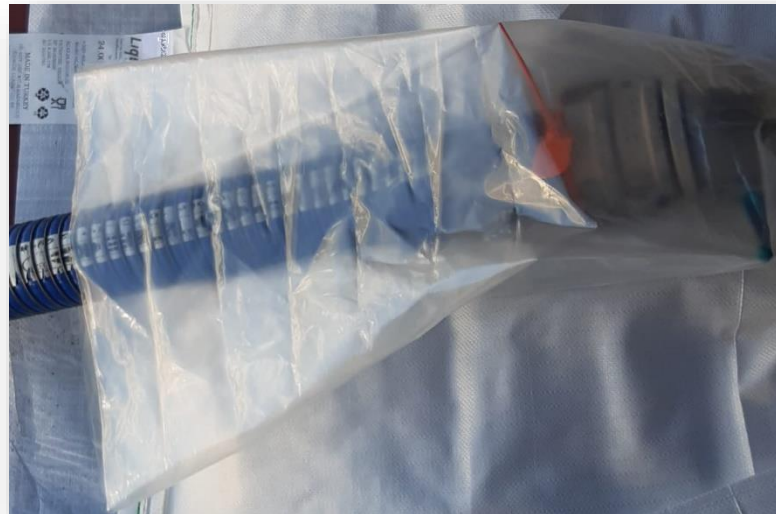
Filling

- Start loading the T-Flex.
- **WARNING:** Ensure that the start up pumping speed does not exceed 300 lt/min until the T-Flex rises to an approximate height of 10cm (roughly the first 2-3,000 liters), then increase the speed up to 450lt/min.
- The total loading time should not be less than **one hour**.
- Please ensure that the filling stations follow this instruction carefully.



Filling

- Ensure that you have chosen a light weight filling hose.
- Make sure that protective plastic cover `bonnet` is unrolled. It will avoid possible contamination due to spillage while decoupling.



Filling

After Loading;

- Close the valve.
- Remove the hose.
- Fasten the dust cap.



| Bonnet Closure



Protective Bonnet has two layers of plastic film.

Both layers must be tied **separately**.

1. Push the outer layer back to expose the inner layer.
2. Twist and wrap the 1st inner layer.
3. Knot it / Tie with cable tie.
4. Pull the 2nd outer layer.
5. Twist and wrap the 2nd outer layer.
6. Knot it / Tie with cable tie.

**EFFICIENT
SMART
SAFE**

LiquA

THANK YOU

LiquA Europe
Calle José Aguirre 40, Piso 3 Valencia España
CP: 46011
+34 91 1238506
LiquA Fabrika
Atabey Cd. No 28 Kat 1 Çekmeköy 34794 İstanbul
Türkiye
+90 216 312 8660

www.liquatrans.com

| info@liquatrans.com