

**EFFICIENT  
SMART  
SAFE**



## ***Fitting and Filling Instructions Manual***

### ***T-Flex Flexitank for Refrigerated Trucks***

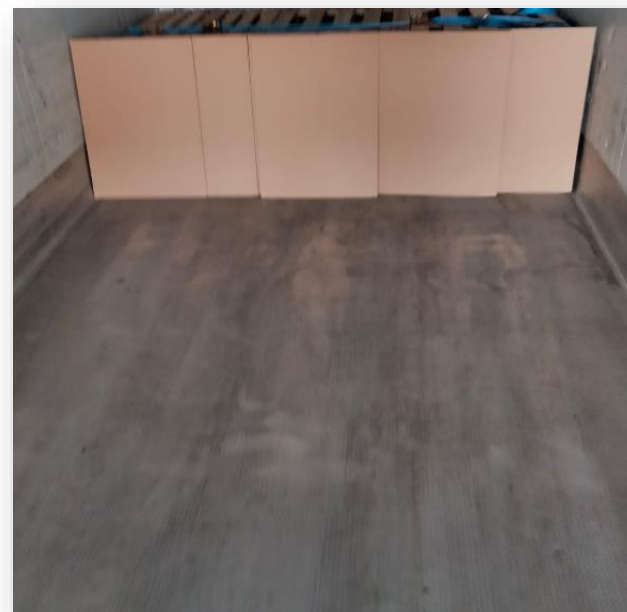
***24 kLt and under 24kLt***

**220906**

**LiquA**

# Truck Selection

- Ensure that the truck is no older than 5 years.
- Ensure that the truck is in excellent condition.
- No damages on the floor or side walls.
- Food grade trucks only - free of odors.



# I Preparations

- Sweep the truck with a broom carefully.
- Ensure that nails and other sharp objects are removed from the floor and the sides.
- Cover potential uneven areas on the floor with duck tape (thick tape).
- Ensure that nails and other objects that may damage/puncture the T-flex are removed or covered with duck tape (thick tape).



# Preparations

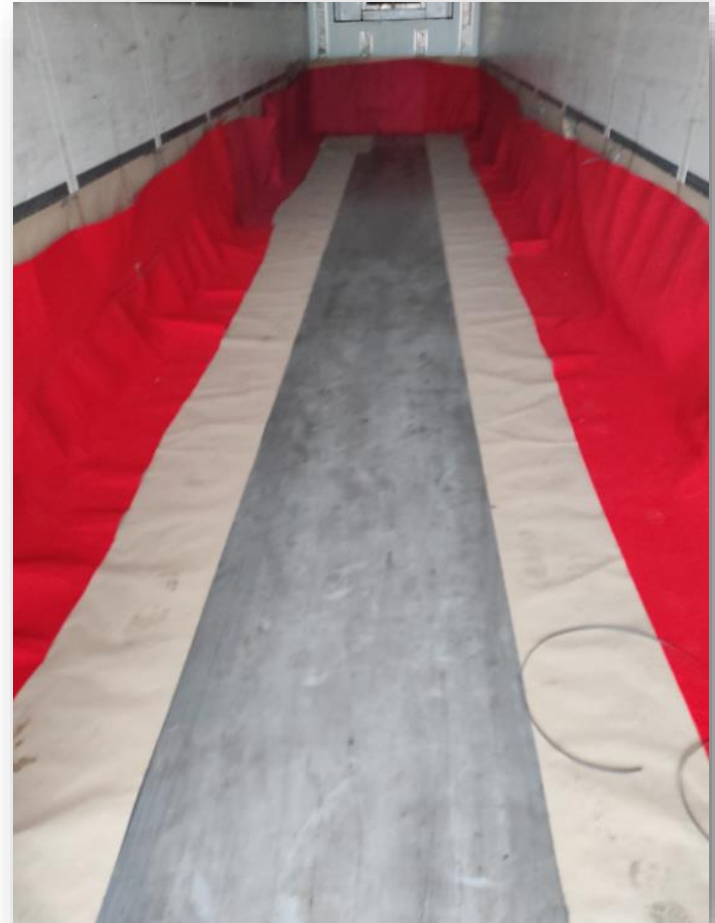
- Use 10 heavy duty, good condition pallets.
- Stack them in two rows to create a barrier.
- Tie them to each other by heavy duty belts.
- Use protective cartons (you may use the box of T-Flex) and carpet to cover the pallet barrier.



**EFFICIENT  
SMART  
SAFE**

# Protection

**IMPORTANT:** Side walls of the truck may have sharp surface. Ensure that side walls are well covered by a carpet.





# Contents of the Box



Open the T-Flex box and ensure that the following are in the package:

1. T-Flex
2. Warning Label
3. Protective Cardboards
4. Cable tie

**The box will be used as protection board.  
DO NOT throw it away!**

# Positioning the T-Flex

- Unroll the T-Flex.
- Do NOT step on the T-Flex while unrolling.
- Make sure T-Flex is placed at the center of the trailer.



# Positioning the T-Flex

- Ensure that the front of T-Flex is leaning to the front pallet barrier.
- **DO NOT** remove the pre-folding tapes.
- **DO NOT** open the folds.





# Belt Tying

If you do not see any appropriate lashing points on the floor do not tie the belts at all. This instruction is applicable ONLY in reefer trucks, not in tented trucks.

DO NOT tie the belts to other locations neither on the walls or any other point on the truck.



**EFFICIENT  
SMART  
SAFE**

# Ready for Filling

**IMPORTANT:**  
DO NOT STEP ON  
THE FLEXITANK  
AT ANY TIME.



**EFFICIENT  
SMART  
SAFE**

# Coupling

- Our standard valve is 3" male camlock. Upon request 2" reductor is available.
- According to your 2 or 3 inch preference you will need to have a **female cam-lock** coupling.



# Coupling

- Break the hygiene seal.
- Remove the dust cap.
- Couple the hose.
- Open the valve.
- Unroll the bonnet.



# Filling

START FILLING...

- Use the fabric or cardboard to protect the flexitank during the loading operation.



**DO NOT pump air inside the flexitank during filling**



# Filling

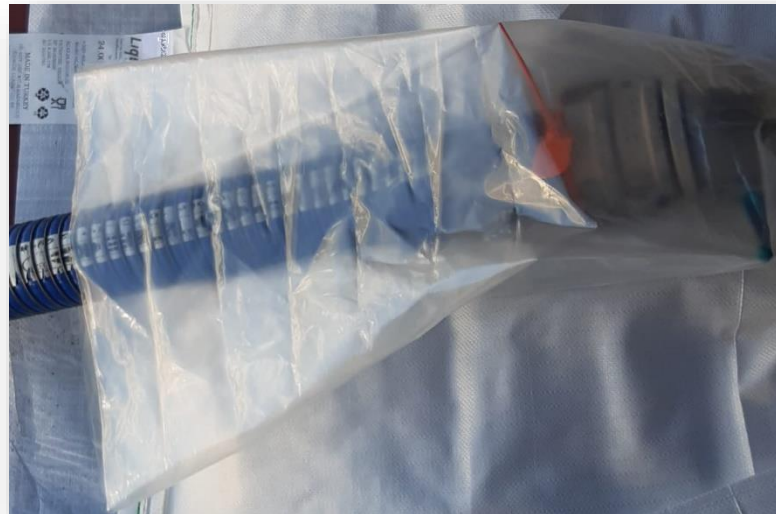
- **WARNING:** Ensure that the start up pumping speed does not exceed 300 lt/min until the T-Flex rises to an approximate height of 10cm (roughly the first 2-3,000 liters), then increase the speed up to 450lt/min.
- The total loading time should not be less than **one hour**.
- Please ensure that the filling stations follow this instruction carefully.





# Filling

- Ensure that you have chosen a light weight filling hose.
- Make sure that protective plastic cover `bonnet` is unrolled. It will avoid possible contamination due to spillage while decoupling.



# Filling

After Loading;

- Close the valve.
- Remove the hose.
- Fasten the dust cap.



# | Bonnet Closure



Protective Bonnet has two layers of plastic film.

Both layers must be tied **separately**.

1. Push the outer layer back to expose the inner layer.
2. Twist and wrap the 1st inner layer.
3. Knot it / Tie with cable tie.
4. Pull the 2nd outer layer.
5. Twist and wrap the 2nd outer layer.
6. Knot it / Tie with cable tie.

**EFFICIENT  
SMART  
SAFE**

*LiquA*

**THANK YOU**

LiquA Europe  
Calle José Aguirre 40, Ptao 3 Valencia España  
CP: 46011  
+34 91 1238506  
LiquA Fabrika  
Atabey Cd. No 28 Kat 1 Çekmeköy 34794 İstanbul  
Türkiye  
+90 216 312 8660

[www.liquatrans.com](http://www.liquatrans.com)

| [info@liquatrans.com](mailto:info@liquatrans.com)